

Installation Instructions & Use Recommendations

FMS Accessories – Rifle Fitting Instructions

These instructions must be read carefully and thoroughly **before** beginning work. FMS Solutions, LLC accepts no liability for damage caused by failure to observe the installation instructions or use recommendations.

Installation of this accessory does not change the factory specified load limits for the motorcycle. Always follow the motorcycle manufacturer's recommendations regarding load limits.

Caution: FMS Solutions, LLC (FMS) weapon mounts and Santa Cruz Gunlocks, LLC (SCG) are intended for temporary, secure storage of firearms. They are not substitutes for a permanent storage enclosure and only act as limited theft deterrents. And they will not prevent accidental discharge/firing of a chambered round. To properly and safely use the FMS weapon mounts with Santa Cruz gunlock:

- **Your weapon mount must be fitted / adjusted to match the weapon being mounted.** It is possible that some weapons will not fit the mount correctly, based on variable components / accessories fitted to the weapon.
- Read and follow all installation instructions!
- Do not use if your firearm does not fit the weapon mount or gunlock properly
- Never leave your firearm unsupervised while using an FMS weapon mount and/or SCG gunlock
- Never place a loaded firearm in an FMS weapon mount and/or SCG gunlock
- Never chamber a round while using a FMS weapon mount and/or SCG gunlock
- It is the responsibility of the user to operate the FMS weapon mount and/or SCG gunlock properly and safely

Note: Several brands of rifles now offer grips with angles different than the standard for many decades which has been 60 degrees.

If you have one of these specialty rifles such as the Springfield Saint or Daniel Defense, you will need to purchase 60 degree grips for these rifles for them to fit properly in the FMS mount.

Rifles with grips other than 60 degree angle will not fit the FMS Accessories rifle mount properly and will negate the safety / security features of the rifle mount.



For most builds, the rifle is not available at the time of installation. Request the measurement below from the agency. You need to know the distance from the muzzle tip to the center of the charging handle to be able to adjust the lower support leg correctly. If possible, have the agency stop by with a rifle to test that it is adjust properly prior to delivery.

Insert the muzzle of the weapon in the muzzle cup and slide the barrel support up or down until the magazine just clears the upper side of the magazine opening.

With the weapon in the mount, move the barrel support up or down until the grip is resting firmly into the well of the lock chamber and that the charging handle is sitting within the opening / guard area. Tighten four M6 hex bolts securely.



Note: The charging handle guard area is extra long and may need to be trimmed-back based on the size of the charging handle – otherwise the weapon may be scratched when installing or removing from mount. Trim with a cordless hacksaw, sand and then touch-up with black paint.

Note: Later model FMS rifle mounts have a larger charging handle opening without guard to better accommodate ambidextrous charging handles and side-folding stocks.

Fitting the Grip to the Lock:

Grips on rifles have evolved and range from the basic A2 style to every imaginable variant to best fit the user. However, minimizing the free play or movement of the grip within the confines of the lock chamber is critical to keeping the rifle in the designed position. If needed, as in the case at right, add one or two Velcro pads to take-up the extra space if your grip has movement within the lock chamber. Special Velcro is provided on later kits. Press the Velcro fully into the hasp to ensure it bonds with the green felt material.

However, the lock hasp must close freely!



Ensure that the gun lock hasp closes completely with zero upward pressure from the rifle pistol grip!

The electro-magnetic lock retracts a plunger inside the hinge of the lock hasp. If the rifle is causing upward pressure that loads the hasp, the electro magnet cannot exert enough force to retract the plunger and the lock will not reliably open!

Lock Failure Will Occur if the gun lock hasp is "loaded" by pressure from the rifle pistol grip.

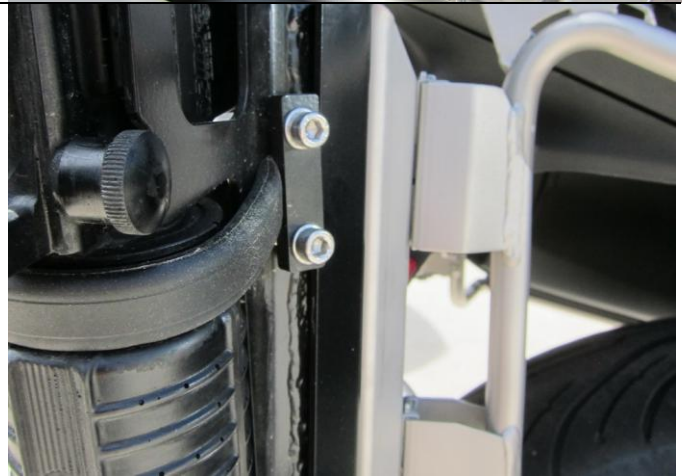
Don't pass a carry strap through the lock hasp!



A rubber strap is provided to keep the weapon from vibrating in the mount as well as provide an added level of security.

Note: It is easier to make this adjustment with the saddlebag removed when using the RH mount.

Adjust the rubber strap to the desired tension based on the forearm design of the weapon, tighten the two M6 bolts securing the strap and cut off the excess with a razor knife.



Security Pins: Additional security can be achieved by using a security pin to replace the push-pin used ahead of the magazine port. These security pins use T15 Security Torx screws to retain the pin. When in position, added security is provided.

Security Pins are available under part number: FMSA-GL-SPAR



Feedback: Thank you for your purchase and we welcome your feedback as we too want to make every accessory exceed your expectations. Report any comments, suggestions, problems or concerns to FMS Solutions, LLC at info@fmsaccessories.com.